

EnVivo

Manual

USB DJ Controller



AFTER SALES SUPPORT



 0844 800 5893  1890 917 060

 accessionx-uk@teknihall.com

MODEL: 57906

- DJ Controller
- USB cable
- Software CD
(MIXVIBES software)
- User manual



Contents

Welcome.....	4
Getting started	5
Top panel features.....	6
Disposal	19
Warranty.....	20
Warranty Card.....	21

AFTER SALES SUPPORT



☎ 0844 800 5893 ☎ 1890 917 060



accessionx-uk@teknihall.com

MODEL: 57906

- DJ Controller
- USB cable
- Software CD
(MIXVIBES software)
- User manual



Welcome

You have made an excellent choice with the purchase of this quality product supplied by Accession ApS.

By doing so you now have the assurance and peace of mind, which comes from purchasing a product that has been manufactured to the highest standards of performance and safety, supported by the high quality standards of Accession ApS.

We want you to be completely satisfied with your purchase, so this product is backed by a comprehensive manufacturer's 3-year warranty and an out-standing after sales service through our dedicated Helpline.

We hope you will enjoy using your purchase for many years to come.

AFTER SALES SUPPORT



☎ 0844 800 5893 ☎ 1890 917 060

accessionx-uk@teknihall.com

MODEL: 57906

- DJ Controller
- USB cable
- Software CD
(MIXVIBES software)
- User manual



Getting started

Installation

Make sure to remove all foam and plastic padding.

Connect all cables.

Always disconnect from computer so it is not getting any power before cleaning.

Damages caused by non-observance are not subject to warranty.

AFTER SALES SUPPORT



☎ 0844 800 5893 ☎ 1890 917 060

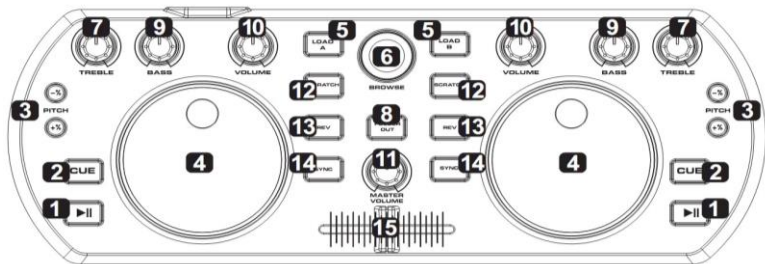
accessionx-uk@teknihall.com

MODEL: 57906

- DJ Controller
- USB cable
- Software CD
(MIXVIBES software)
- User manual



Top panel features



BELOW IS A DESCRIPTION OF THE FUNCTIONS OF THE CONTROL.

1. **PLAY/PAUSE** Each time you press the PLAY/PAUSE button, the operation changes from play to pause or from pause to play.
2. **CUE** By pressing the CUE button you will return to the track to the CUE point and pause it (if you have not set a CUE point with the PAUSE button yet, the CUE point will be the beginning of the track). When you are at the CUE point,

AFTER SALES SUPPORT



☎ 0844 800 5893 ☎ 1890 917 060

📧 accessionx-uk@teknihall.com

MODEL: 57906

- DJ Controller
- USB cable
- Software CD
(MIXVIBES software)
- User manual

3

YEAR
WARRANTY

press and hold the CUE button to start playback. When you release the CUE button, the track will return to the CUE point and the track will be paused. While you are holding down the CUE button, you can press PLAY then release both buttons to allow playback to continue normally.

3. **PITCH ±** Pressing one of these buttons will bend the pitch of the track on that deck, slightly decreasing or increasing its speed. By clicking on both buttons at the same time, the track will return to its normal pitch (this is an important feature when manually aligning the beats of two tracks).
4. **JOG WHEEL** Scratches or searches through the track on that deck, depending on the JOG WHEELS' current mode (as set by the SCRATCH /SEARCH button): Scratch mode: When the Scratch LED is lit, moving the JOG WHEEL "Scratches" on the track on that deck - an effect similar to moving the platter on a turntable.

AFTER SALES SUPPORT



0844 800 5893 1890 917 060

accessionx-uk@teknihall.com

MODEL: 57906

- DJ Controller
- USB cable
- Software CD
- (MIXVIBES software)
- User manual



Search mode: When the Scratch LED is unlit and the deck is paused, moving the JOG WHEEL will search through the track on that deck. If the deck is playing while in Search mode, moving the JOG WHEEL will bend on the pitch of the track on that deck, slightly decreasing or increasing its speed. When you release the button, the track will return to its normal pitch (this is an important feature when manually aligning the beats of two tracks).

5. **LOAD** Press this button to load the selected track on that deck.
6. **BROWSE KNOB** Turn this knob to scroll through and select your music track in the software. Press the knob to enter a folder or return to the next-highest folder in the software.
7. **TREBLE** Adjusts the high-end frequencies of the music on that deck.
8. **FOLDER OUT** Allows you to navigate through folders similarly

AFTER SALES SUPPORT



0844 800 5893 1890 917 060

accessionx-uk@teknihall.com

MODEL: 57906

- DJ Controller
- USB cable
- Software CD
- (MIXVIBES software)
- User manual



in either USB or CD mode.

9. **BASS** Adjusts the low-end frequencies of the music on that deck.
10. **VOLUME** Adjusts the volume level of the music on that deck.
11. **MASTER VOLUME** Adjusts the volume level of the entire mix (the music from both decks heard together). To adjust the volumes of each deck separately, use the VOLUME knobs.
12. **SCRATCH/SEARCH** Press this button to put the JOG WHEELS in Scratch mode or Search mode. When this LED is lit, the JOG WHEELS are in Scratch mode. When this LED is unlit, the JOG WHEELS are in Search mode.
13. **REV** Push the reverse button to play your track in reverse, push the reverse button again to cancel this feature.
14. **SYNC** Press this button to match the tempo and align the beats of the track on that deck with the track on the

AFTER SALES SUPPORT



0844 800 5893 1890 917 060

accessionx-uk@teknihall.com

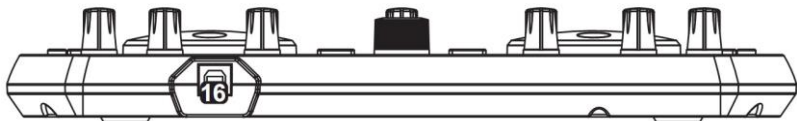
MODEL: 57906

- DJ Controller
- USB cable
- Software CD
(MIXVIBES software)
- User manual



opposite deck automatically.

15. **CROSSFADER** Slide the CROSSFADER towards a deck to cause the deck's track to be heard in the mix. This is an important tool for blending the track together, moving from one track to the next, and creating a good overall mix.



16. **POWER INPUT** For connecting the included USB cable for connection to a computer.

AFTER SALES SUPPORT



☎ 0844 800 5893 ☎ 1890 917 060



accessionx-uk@teknihall.com

MODEL: 57906

- DJ Controller
- USB cable
- Software CD
(MIXVIBES software)
- User manual



Software Installation

1. When you insert the software CD, the below screen will pop up.



Select the language you want, click OK.

AFTER SALES SUPPORT



☎ 0844 800 5893 ☎ 1890 917 060

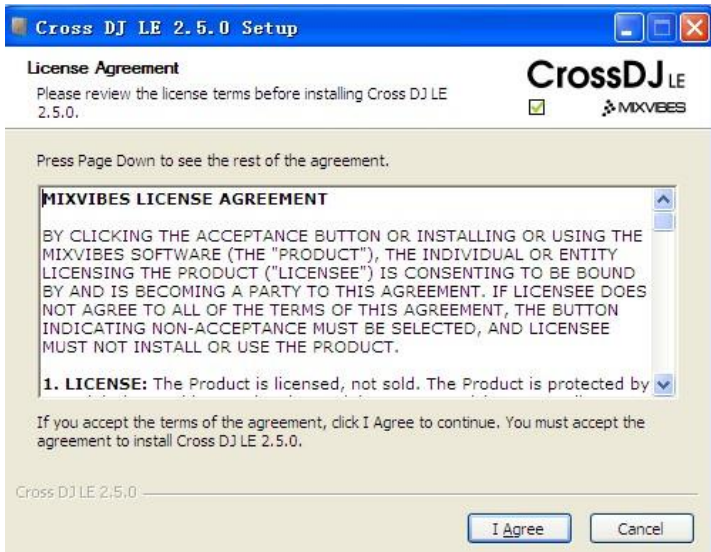
📧 accessionx-uk@teknihall.com

MODEL: 57906

- DJ Controller
- USB cable
- Software CD
(MIXVIBES software)
- User manual



2. The below screen will pop up.



Click I agree.

AFTER SALES SUPPORT



0844 800 5893 1890 917 060



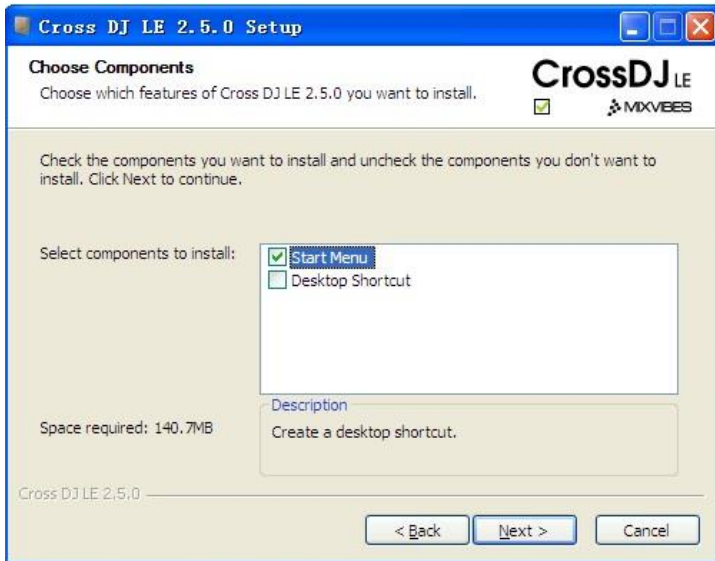
accessionx-uk@teknihall.com

MODEL: 57906

- DJ Controller
- USB cable
- Software CD
(MIXVIBES software)
- User manual



3. The screen shown below will pop up.



Click Next (you also can tick the Desk top shortcut).

AFTER SALES SUPPORT



0844 800 5893 1890 917 060



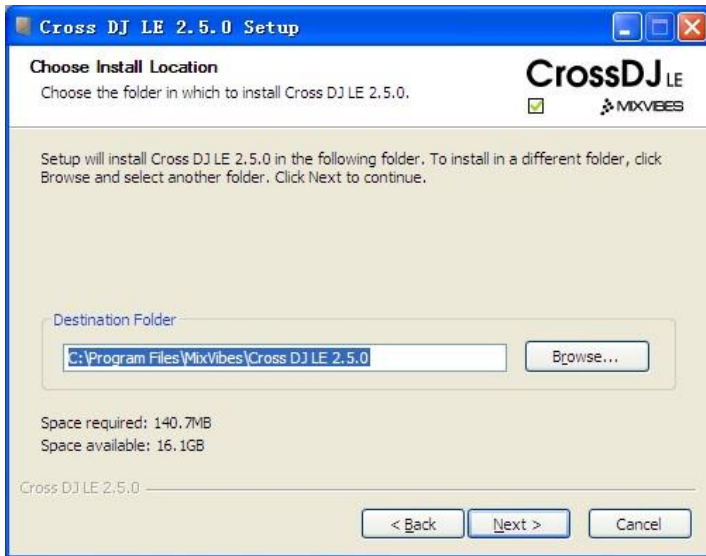
accessionx-uk@teknihall.com

MODEL: 57906

- DJ Controller
- USB cable
- Software CD
(MIXVIBES software)
- User manual



4. Now the file as shown below will pop up.



Click Next (you can click browse to select the destination folder).

AFTER SALES SUPPORT



0844 800 5893 1890 917 060

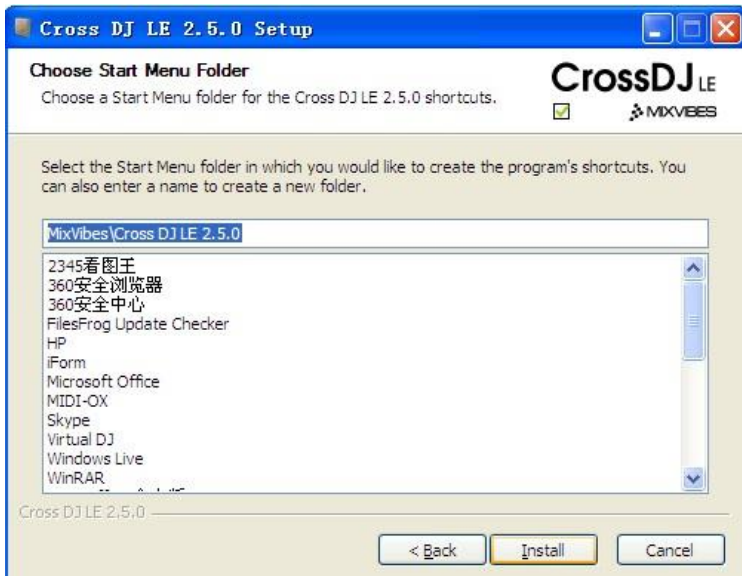
accessionx-uk@teknihall.com

MODEL: 57906

- DJ Controller
- USB cable
- Software CD
(MIXVIBES software)
- User manual



5. Then the below screen will pop up.



Click Install

AFTER SALES SUPPORT



☎ 0844 800 5893 ☎ 1890 917 060



accessionx-uk@teknihall.com

MODEL: 57906

- DJ Controller
- USB cable
- Software CD
- (MIXVIBES software)
- User manual



6.The screen shown below will pop up.



Click Finish, and the interface of the typed in serial no will appear.

AFTER SALES SUPPORT



☎ 0844 800 5893 ☎ 1890 917 060



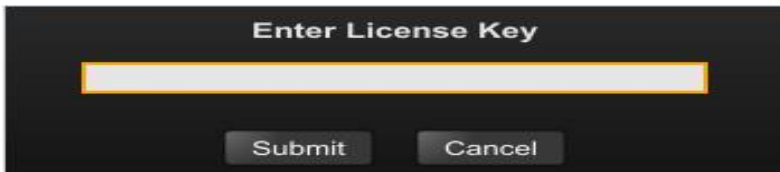
accessionx-uk@teknihall.com

MODEL: 57906

- DJ Controller
- USB cable
- Software CD
(MIXVIBES software)
- User manual



The below will be shown (serial no. sticker on the back of the unit).



Type in the serial no. Click Submit, and the following interface will be shown. You are now able to operate the unit.

AFTER SALES SUPPORT



☎ 0844 800 5893 ☎ 1890 917 060

📧 accessionx-uk@teknihall.com

MODEL: 57906

- DJ Controller
- USB cable
- Software CD
(MIXVIBES software)
- User manual





For more information on how to operate the program, please visit
<http://www.mixvibes.com/>

AFTER SALES SUPPORT

☎ (GB) 0844 800 5893 (IRE) 1890 917 060
 📧 accessionx-uk@teknihall.com

MODEL: 57906

- DJ Controller
- USB cable
- Software CD
- (MIXVIBES software)
- User manual



Disposal



Batteries, electrical and electronic equipment (EEE) contains materials, parts and substances, which can be dangerous to the environment and harmful to human health if waste of

electrical and electronic equipment (WEEE) is not disposed of correctly.

Batteries, electrical and electronic equipment, which is marked with the WEEE logo (as shown on the left), should not be thrown away with your household waste. Contact your Local Authority Waste Disposal Department, as they will be able to provide details of the recycling options available in your area.

AFTER SALES SUPPORT



☎ 0844 800 5893 ☎ 1890 917 060

accessionx-uk@teknihall.com

- DJ Controller
- USB cable
- Software CD (MIXVIBES software)
- User manual

3

YEAR
WARRANTY

MODEL: 57906

Warranty

We want you to be completely satisfied with your purchase so this EnVivo product is backed by a comprehensive manufacturer's 3 year warranty and an outstanding after sales service through our dedicated Helpline.

If you require technical support or in the unlikely event that the purchase you have made is faulty, please telephone our Helpline for immediate assistance. Faulty product claims made within the 3 year warranty period will be repaired or replaced free of charge provided that you have satisfactory proof of purchase (keep your till receipt safe!). This does not affect your statutory rights. However, be aware that the warranty will become null and void if the product is found to have been deliberately damaged, misused or disassembled.

AFTER SALES SUPPORT



☎ 0844 800 5893 ☎ 1890 917 060

accessionx-uk@teknihall.com

MODEL: 57906

- DJ Controller
- USB cable
- Software CD
(MIXVIBES software)
- User manual



EnVivo

Warranty Card

USB DJ Controller 57906

Please keep your purchase receipt together with your warranty card

Name _____ 

Address _____

Date and location of purchase _____

Detailed description of malfunction

Supplier: Accession ApS / Nibevej 54 / DK-9200 Aalborg SV / www.accessionx.com

AFTER SALES SUPPORT



☎ 0844 800 5893 ☎ 1890 917 060



accessionx-uk@teknihall.com

MODEL: 57906

- DJ Controller
- USB cable
- Software CD
(MIXVIBES software)
- User manual

3
YEAR
WARRANTY