

**New feature “Internet TV” for Envivo Full HD DVR Media Player!! Please view the full instructions [here!](#)**



Introducing new feature of “Internet TV” for Envivo Full HD DVR Media Player, ENV-1101 brings a world of online entertainment direct to your TV.

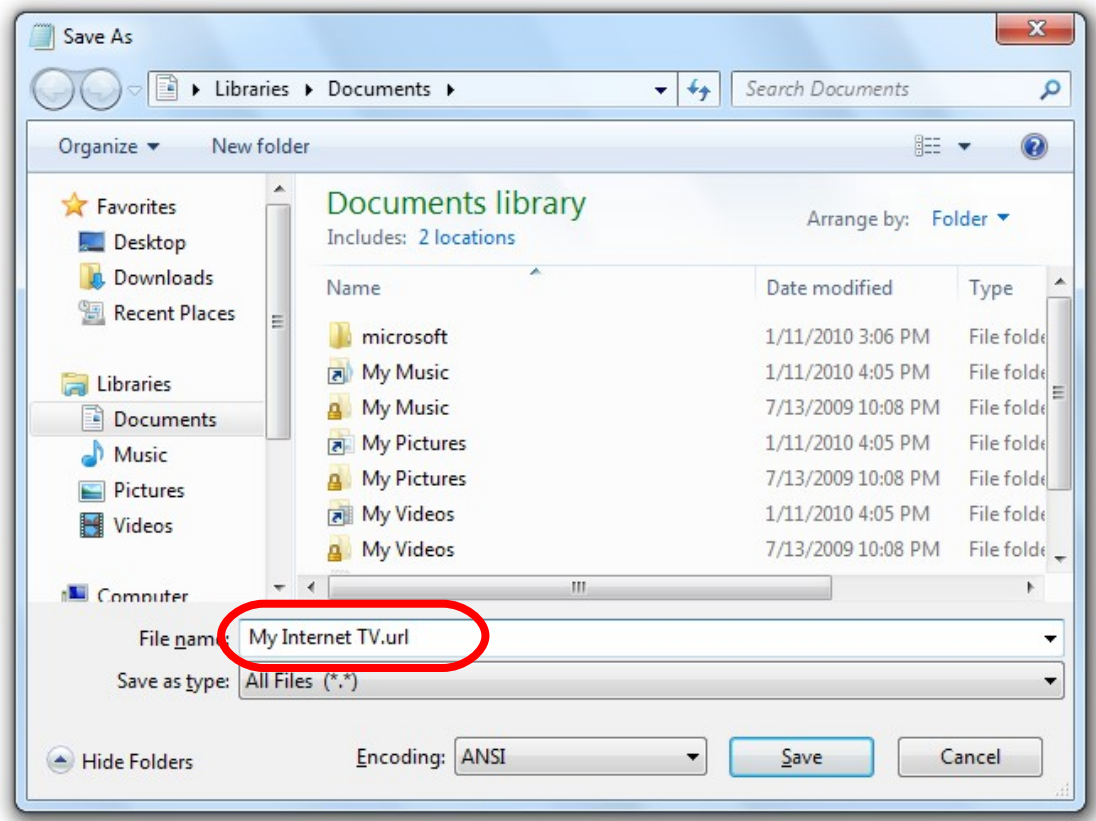
Please read the following instructions before proceeding to this new feature.

### **Internet TV**

#### **Add an Internet TV URL (When Internal HDD Is Installed)**

1. Acquire an **mms** or **rtsp** link of an Internet TV from website.
2. Use a text editor to capture (copy and paste) the complete path of the link and save the file with .url extension. The filename will be the name showing under **Internet TV** menu.





3. Copy the .url file to the **NetTV** folder in the internal HDD. (see page 7 in the User Manual, **Transferring files on a USB connection**)

### Add an Internet TV URL (When Internal HDD Is Not Installed)

1. Acquire an **mms** or **rtsp** link of an Internet TV from website.
2. Use a text editor to capture (copy and paste) the complete path of the link and save the file with .url extension to a USB drive.
3. After connecting the USB drive to this device, you can browse them in the **All** mode of the **Main Menu**.



Note:

- Only **mms** & **rtsp** links are supported.
- One .url file can only have one **mms** or **rtsp** link. That is, if you have multiple links, give each one of them a separate file.
- The **Internet TV** function requires the internal HDD to be installed to work. Once installed, the firmware will create a **NetTV** folder automatically.
- Please make sure that the links are alive.