

# Activity Tracker

## Quick Start Guide



<b>AFTER SALES SUPPORT</b>		
	<b>0844 800 5893</b> <b>1890 917 060</b>	 <b>accessionx-uk@teknihall.com</b>
MODEL: 1327	PRODUCT CODE: 61828	08/2014

<b>3</b> <b>YEARS</b> <b>WARRANTY</b>
---

<b>CONTENTS</b> <ul style="list-style-type: none"><li>• Activity Tracker</li><li>• Charging Cable</li><li>• Quick Start Guide</li></ul>
---

### WELCOME

You have made an excellent choice with the purchase of this quality product imported by Accession ApS.

By doing so you now have the assurance and peace of mind which comes from purchasing a product that has been manufactured to the highest standards of performance and safety, supported by our high quality standards.

We want you to be completely satisfied with your purchase, so this product is backed by a comprehensive manufacturer's 3 year warranty and an outstanding after sales service through our dedicated Helpline.

We hope you will enjoy using your purchase for many years to come.

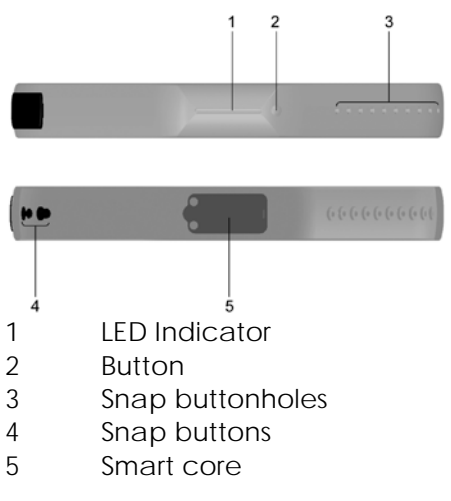
Before installing and using the product, please read the instructions thoroughly, and retain them for future reference. Hope you have a pleasant experience.

### PRECAUTIONS

- Clean it only with a soft cloth slightly dampened with warm water or a mild soap.
- Do not subject the product to excessive force, shock, dust, temperature changes, or humidity. Never expose the product to direct sunlight for extended periods. Such treatment may result in malfunction.
- Do not tamper with the internal components. Doing so will terminate the product warranty and may cause damage. The main unit contains no user-serviceable parts.
- The product is a precision instrument. Never attempt to take this device apart. Contact the retailer or our customer service department if the product requires servicing.
- Due to printing limitations, the displays shown in this manual may differ from the actual display.
- The contents of this quick start guide may not be reproduced without the permission of the manufacturer.

**NOTE** The technical specifications for this product and the contents of the quick start guide are subject to change without notice. For complete instructions on using the product, please refer to the online user manual, visit [www.oregonscientific.com](http://www.oregonscientific.com). The English version of the manual contains the most updated operating function description.

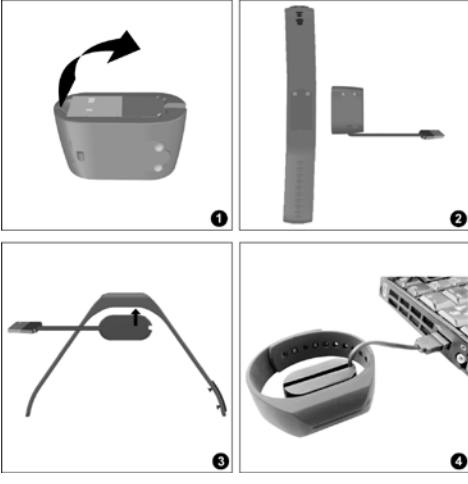
### OVERVIEW



**CHARGING AND INDICATORS**

Charge the smart core for at least 1 hour before your first use.

1. Unwire the USB cable from the charger pod.
2. Align the two metal connection points of the charger pod with the pair on the smart core.
3. Make sure that the magnetic connection points touch each other and that they are fully connected.
4. Plug the big end of the USB cable into USB port of your PC.



5. Once the smart core is correctly connected with the charger pod, the indicator turns on.

**GETTING STARTED**

**WEAR**

Your activity tracker is adjustable to fit different wrist sizes. Make sure the activity tracker is not too loose to avoid inaccurate calculations.

**APPLICATION**

Your activity tracker can help track your activities during the day and your sleep status at night while transmitting your data with your mobile device.

Download 'Dynamo' application ( ). It is available in the Apple App Store and Google Play Store. Visit the official website of your activity tracker for more information: [smart.oregonscientific.com/dynamo](http://smart.oregonscientific.com/dynamo)

**Connect to your mobile device**

Activate Bluetooth on your smart phone, and start the Dynamo App on your phone. Press and hold the operation button on the wristband for 5 seconds. The indicator will flash 3 times in blue.

Indicators	Status
Red is on	Charging
Green is on	Charging completed
Red blinks 3 times when the button is pressed.	Low battery

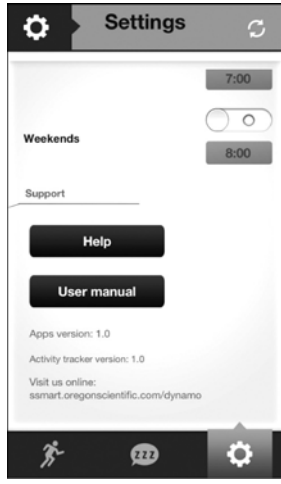
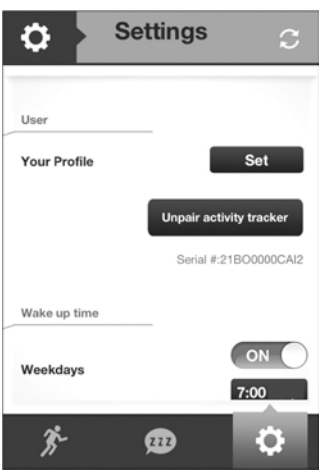
**SETTINGS**

Edit your profile at anytime by following the below steps:

1. Tap icon in the Dynamo app to enter setting screen.
2. You can set different settings, including **User**, **Activity**, **Wake up time** and **Support**.

**NOTE**

1. If you want to use another compatible activity tracker, you need to unpair the previous activity tracker from the application.
2. The activity tracker will automatically deactivate the sleep mode and then switch to the activity mode at your set wakeup time to avoid that user forgets to switch back to the activity mode by pressing the button.



**NOTE** Interface of the application is subject to change without notice.

**ACTIVITY MODE**

The activity tracker monitors you to achieve 30 minutes a day or 150 minutes per week moderate-intensity physical activity volume.

Once you press the operational button, the corresponding LED indicator turns on for 3 seconds.

Your Activity Achievement	LED color
< = 50%	Red
51-89%	Yellow
90-99%	Green
> =100%	Blue

**To view activity data**

Tap icon in the Dynamo app.

Tap on your desired area, the screen displays corresponding screen, including graphical view.

Tap the arrow again to go back to the previous screen.

**SLEEP MONITORING MODE**


**Start your sleep**

Press and hold the button on the wristband until the LED indicator turns purple.

**After your sleep**

Press and hold the button on the wristband again until the LED indicator blinks 3 times in purple.

**To view sleep data**

Tap  icon in the Dynamo app after you have synchronized with your smartphone/tablet to view the sleeping data.

**WATERPROOF**

The tracker is water-resistant up to 1 ATM / 10m. This means you can use the tracker for simple water sport activity, but it must not be used for snorkeling and deep water diving.

**SPECIFICATIONS**

Type	Description
Dimension (L x W x H)	38 x 23 x 18 mm (1.5 x 0.9 x 0.7 inches)
Weight	20.9 g (0.74 oz)
Waterproof	IPX8 certified
Battery Life	10 days
Memory	Stores 14 days of data
Bluetooth	4.0 BLE

**DISPOSAL**

Batteries, electrical and electronic equipment (EEE) contain materials, parts and substances, which can be dangerous to the environment and harmful to human health if waste of electrical and electronic equipment (WEEE) are not disposed of correctly. Batteries, electrical and electronic equipment, which are marked with the WEEE logo (as shown on the left), should not be thrown away with your household waste. Contact your Local Authority Waste Disposal Department, as they will be able to provide details of the recycling options available in your area.

**WARRANTY**

We want you to be completely satisfied with your purchase so this product is backed by a comprehensive manufacturer's 3 year warranty and an outstanding after sales service through our dedicated Helpline.

If you require technical support or in the unlikely event that the purchase you have made is faulty, please telephone our Helpline for immediate assistance. Faulty product claims made within the 3 year warranty period will be repaired or replaced free of charge provided that you have satisfactory proof of purchase (keep your till receipt safe!). This does not affect your statutory rights. However, be aware that the warranty will become null and void if the product is found to have been deliberately damaged, misused or disassembled.

✂-----

**WARRANTY CARD**

Activity Tracker - 61828

Please keep your purchase receipt together with your warranty card

Name \_\_\_\_\_

Address \_\_\_\_\_

Tel.No. \_\_\_\_\_

Date of purchase \_\_\_\_\_

Location of purchase \_\_\_\_\_

**Please state detailed description of malfunction:**